

# Industrial Controls



**Acutech** has broad based and experienced Engineers from Major Machine Builders and Design shops. Our experience covers the conceptualization, design, fabrication and start up of numerous Assembly Machines and Production Lines.

**Acutech** has covered the globe, providing quality controls systems design, engineering and start-up/commissioning with follow up field service and support.

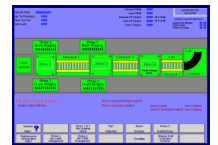
**Acutech** has the project leadership and expertise to work seamlessly with our customers and their design teams.

**Acutech** provides Controls system design, software and startup. With a strong Automation and Manufacturing background **Acutech** will design the right system for your application.

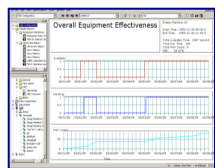
## Project Size Doesn't Matter—Large or Small

**HMI Design** for any application

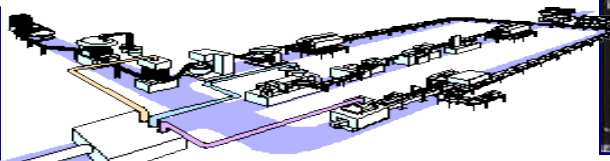
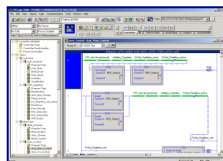
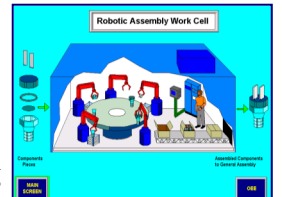
Stand Alone and Multiple Station Automation and Manufacturing work cells and assembly lines



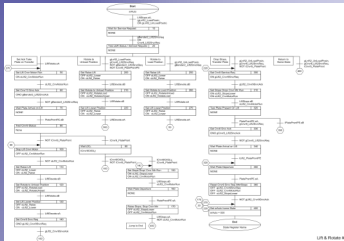
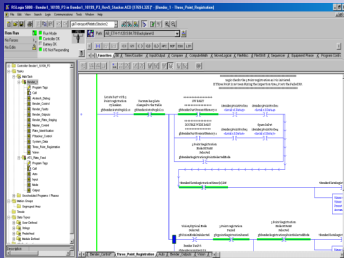
**Software and PLC** design of automated lines which move assemblies around the production floor.



**Flow Charts** define your process, and develop State Logic routines with built in system indicators that interface with Fault tracking and Maintenance Text Messages to define operation along with system faults and data tracking in the manufacture of your product.



# Our Mission



**Committed to enhancing our Customers' success with services that set standards for quality and value. We strive to be the very best in every aspect of our business by fostering a culture of trust, teamwork, responsibility, high expectations and open communications with every employee, every supplier and every customer.**

**We Offer -Design and implementation of programmable controller and PC based controls systems. Electrical and controls design for the highest accuracy, speed, and design flexibility.**

**Some of the Brands and Products we support:**

- **Custom HMI and PLC Interfaces**
  - **Allen Bradley– RS5000, Rs500, Rs5**
  - **Siemens S7-300, S7-200 PLC**
  - **Modicon / Omron**
  - **Mitsubishi**
  - **Pro-Face HMI**
- **Panelview and Panelview Plus HMI Design**
- **Custom Machine Vision Applications**
  - **Cognex Vision**
  - **Banner Vision**

**Our Engineering Group is comprised of Design, Controls and Software Engineers with related training and experience in the following areas:**

- **Industrial Controls Systems**
  - **Automotive**
  - **Material Handling**
  - **HVAC Forming and Assembly Lines**
  - **Custom Manufacturing equipment**
- **Automation Control Systems**
- **HMI Systems**
- **AutoCAD Electrical Design**
- **Project Flow Charting**
- **Controls & Project Management**
- **Field Service and Support**

**Acutech is uniquely positioned to supply, service and support our customers with quality services.**

**Contact us for more details!**

[www.acu-tech.net](http://www.acu-tech.net)

**Acutech, LLC**

25831 Pierina Dr. \* Elkhart, IN 46514

Phone: 574.262.8228 Fax: 574-262-4289

24 Hr Phone 574-370-3464

**Joe Bella –Pat Kelsey**

[jbella@acu-tech.net](mailto:jbella@acu-tech.net)

[Pat@acu-tech.net](mailto:Pat@acu-tech.net)